



Parklands Drive, London N3 3HA

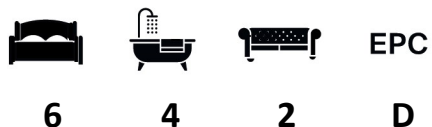
WAYNE
& SILVER

Parklands Drive, London N3 3HA

An outstanding six-bedroom family home arranged over three floors, situated on one of Finchley's most sought-after roads. Recently refurbished to a high standard, the ground floor features a spacious entrance hall, formal reception room, separate TV room, guest cloakroom and open-plan kitchen and dining space with direct access to a private garden. The property also benefits from off-street parking.

The first floor offers five generously sized bedrooms, two with en suite bathrooms, along with a contemporary family bathroom and a separate utility room. Occupying the entire top floor, the principal suite includes a walk-in wardrobe, dressing area and a well-appointed en suite bathroom.

This remarkable home has been thoughtfully designed to provide modern family living in a prime residential location, within close proximity to highly regarded schools, a wide array of local amenities, and excellent transport links.



Guide price: £11,000 Per Month

Tenure:

Service Charge: Add text here

Local Authority:

Council Tax Band: G





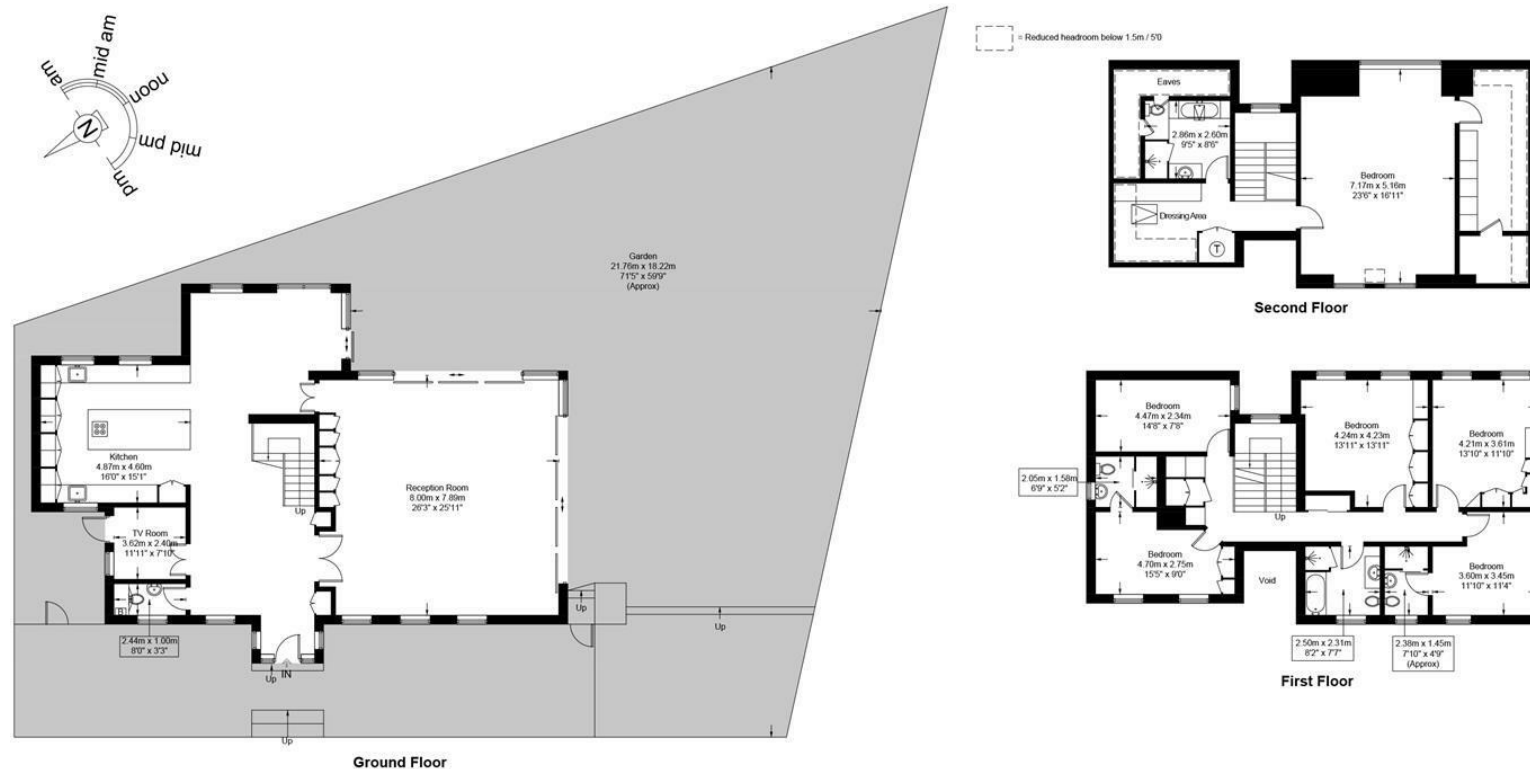




Parklands Drive, N3

Approximate Gross Internal Area = 3671 sq ft / 341.1 sq m

Restricted Height = 157 sq ft / 14.6 sq m



This plan is for layout guidance only and is not drawn to scale unless stated. All dimensions, including windows, doors, and the Total Gross Internal Area (GIA), are approximate. For precise measurements, please consult a qualified architect or surveyor before making any decisions based on this plan.



41 Heath Street
Hampstead
London
NW3 6UA

We would be delighted to tell you more
020 7431 4488
info@wayne-silver.com

wayne-silver.com

Important Notice: Wayne & Silver, its clients and any joint agents give notice that 1: They are not authorised to make or give any representations or warranties in relation to the property either here or elsewhere, either on their own behalf or on behalf of their client or otherwise. They assume no responsibility for any statement that may be made in these particulars. These particulars do not form part of any offer or contract and must not be relied upon as statements or representations of fact. 2: Any areas, measurements or distances are approximate. The text, photographs and plans are for guidance only and are not necessarily comprehensive. It should not be assumed that the property has all necessary planning, building regulation or other consents and Wayne & Silver have not tested any services, equipment or facilities. Purchasers must satisfy themselves by inspection or otherwise.